

# Creating A Fuel Fill – Drain Report In The Bongo IoT Platform:

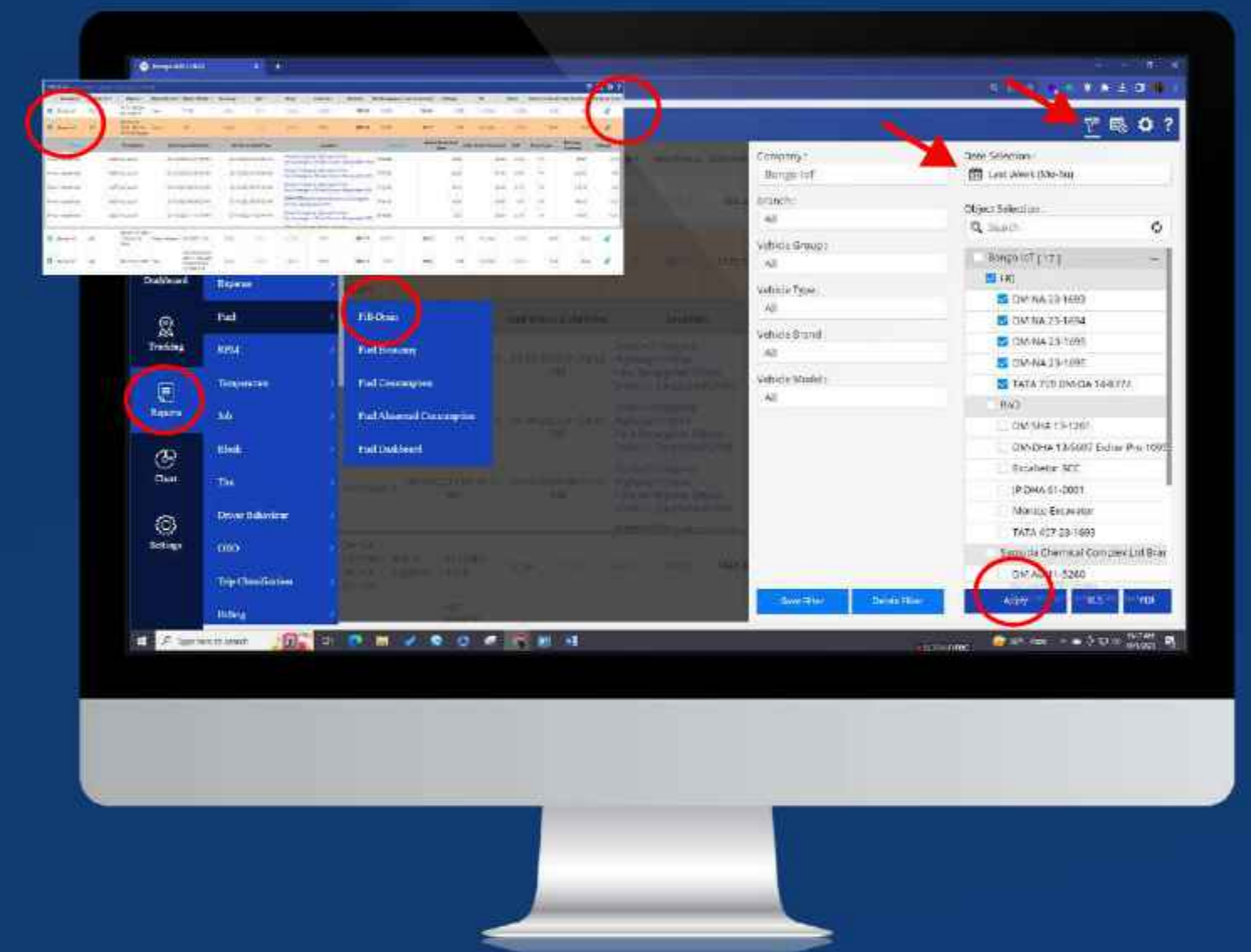
## Access Fuel Fill – Drain Reports:

- Navigate to the "**Side Menu Bar**" and select "**Report**"→ **Fill-Drain**
- In the "**Fill-Drain**" section, you'll find an overview screen displaying previously generated fuel economy reports.

## Create a Fill-Drain Report:

To generate a single or multiple vehicle Fill-Drain report, follow these steps:

- Select the Company, Branch, Vehicle Group, Vehicle Type, and Date from the filter options.
- Choose the duration, such as "Today," "Yesterday," "This Week," "Last Week," "Last Month," or "Custom Range."
- For a custom range, use the date and time picker to select specific start and end dates.
- Click the "**Apply**" button.
- A fuel fill-drain report window will appear, displaying the requested data.
- You can save or delete the filter's input field.
- To know more detail on the left side click on "**plus**" symbol
- Review the Summary Report



## Fill –Drain Chart:

- In the Fill-Drain Report window, navigate to the right-side column labeled '**Fill-Drain Chart.**'
- Click on the '**Blue Symbol**' icon.
- This action will display the '**Fill-Drain**' chart.

## Download the Report:

- You can choose to download the report immediately from the filter screen or access it later.
- The entire summary of the fuel fill-drain can be viewed at a glance after clicking the description icon.
- Click the "**PDF**" or "**XLS**" button to download the reports.

By following these steps, you can efficiently create, schedule, and access Fuel Economy Reports in the Bongo IoT platform.

# Creating A Fuel Economy Report In The Bongo IoT Platform

## Access Fuel Economy Reports:

- Navigate to the "Side Menu Bar" and select "Report" -> Fuel Economy
- In the "Fuel Economy" section, you'll find an overview screen displaying previously generated fuel economy reports.

## Create a Fuel Economy Report

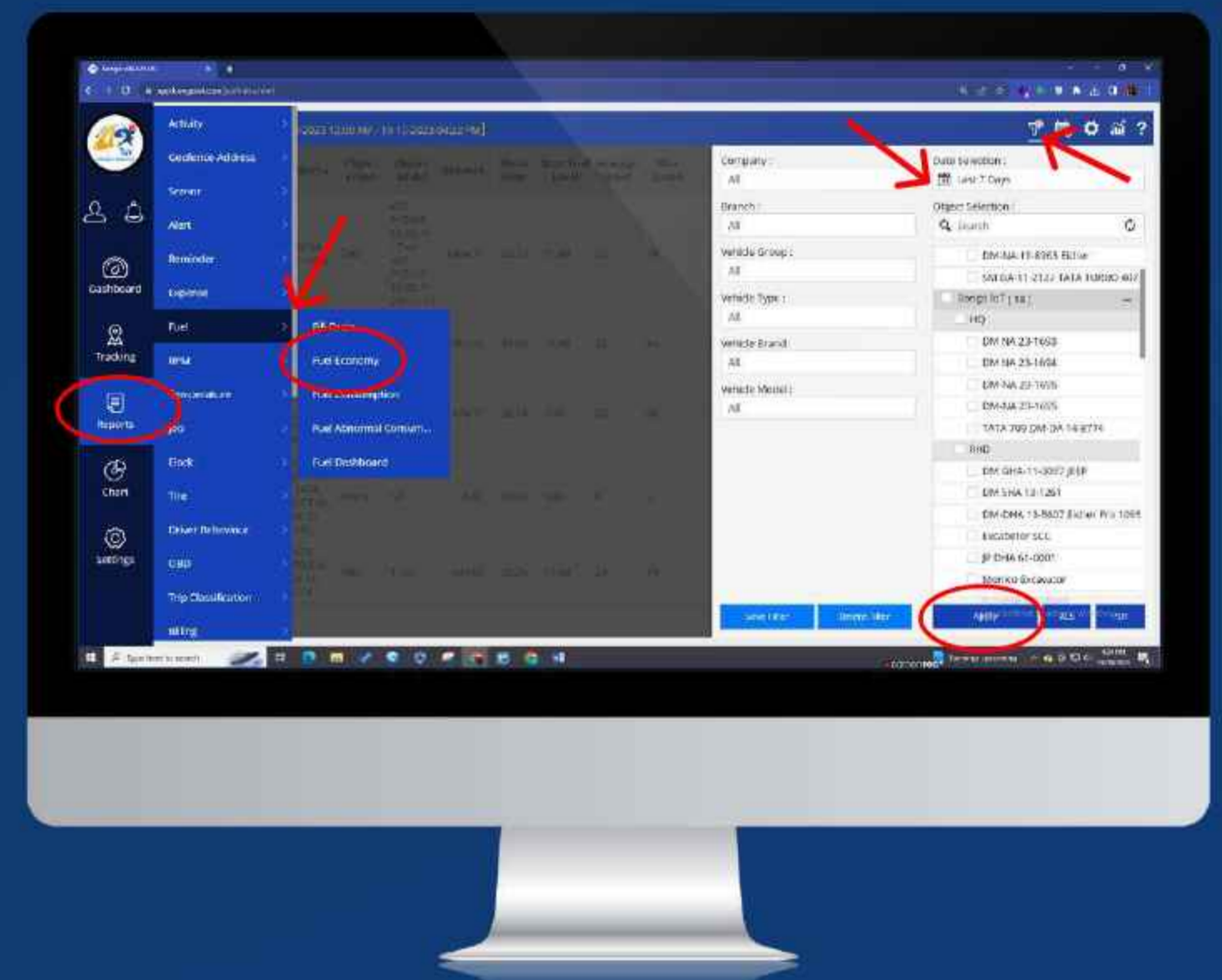
To generate a single or multiple vehicle Fuel Economy report, follow these steps:

- Select the Company, Branch, Vehicle Group, Vehicle Type, Vehicle Brand, Vehicle Model, and Date from the filter options
- Click the "Apply" button.
- A fuel economy report window will appear, displaying the requested data.
- You can save or delete the filter's input field.
- Choose the duration, such as "Today," "Yesterday," "This Week," "Last Week," "Last Month," or "Custom Range."
- For a custom range, use the date and time picker to select specific start and end dates.
- The duration will be implemented after clicking the "Apply" button.
- Choose objects from the bottom panel or via the search bar.
- Review the Summary Report.

## Download the Report:

- You can choose to download the report immediately from the filter screen or access it later.
- The entire summary of the fuel economy can be viewed at a glance after clicking the description icon.
- Click the "PDF" or "XLS" button to download the reports.

By following these steps, you can efficiently create, schedule, and access Fuel Economy Reports in the Bongo IoT platform.



# Creating A Fuel Consumption Report In The Bongo IoT Platform:

## Access Fuel Consumption Reports:

- Navigate to the "Side Menu Bar" and select "Report" -> **Fuel Consumption**
- In the "Fuel Consumption" section, you'll find an overview screen displaying previously generated fuel economy reports.

## Create a Fuel Consumption Report:

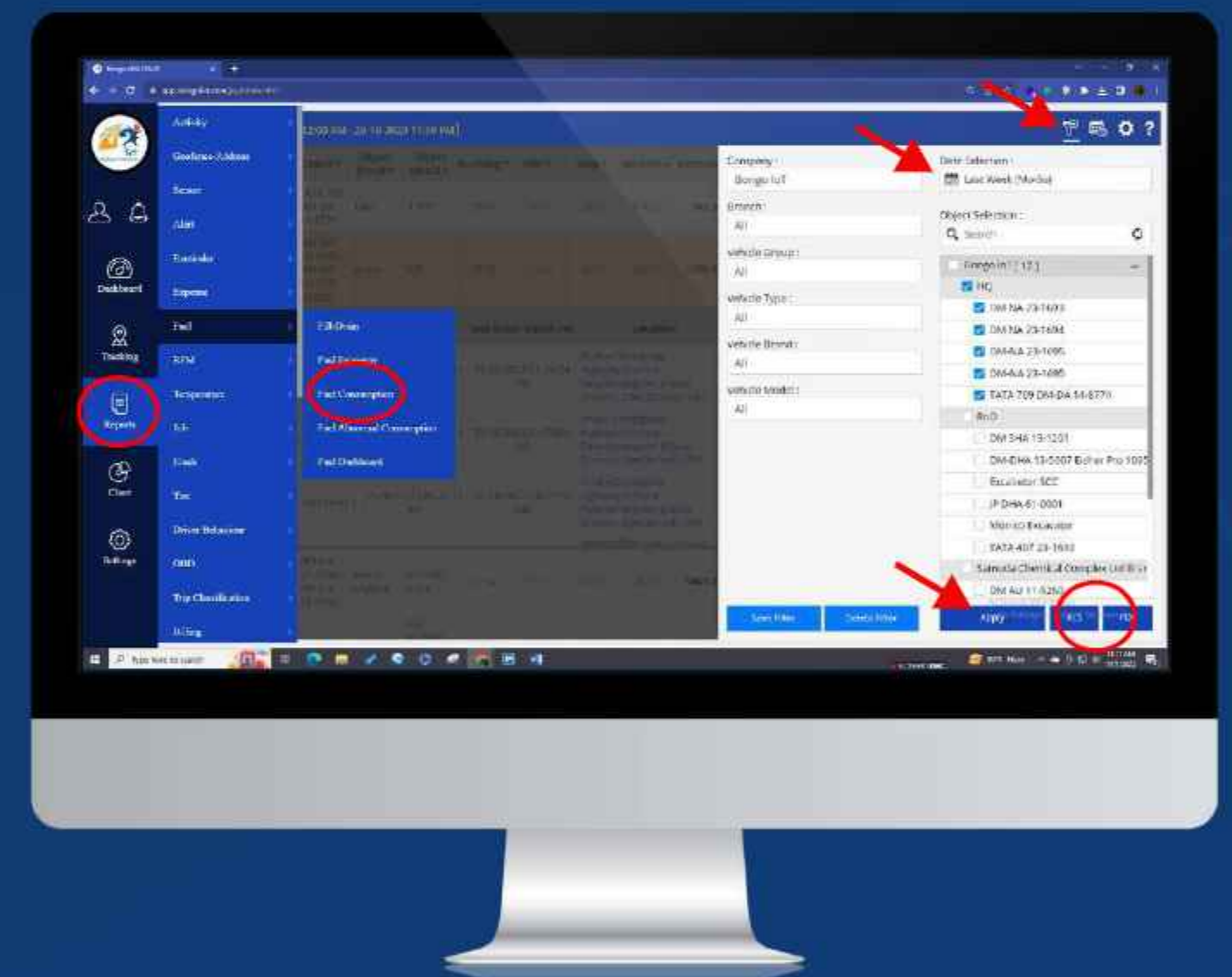
To generate a single or multiple vehicle Fuel Consumption report, follow these steps:

- Select the Company, Branch, Vehicle Group, Vehicle Type, and Date from the filter options.
- Choose the duration, such as "Today," "Yesterday," "This Week," "Last Week," "Last Month," or "Custom Range."
- For a custom range, use the date and time picker to select specific start and end dates.
- Click the "Apply" button.
- A fuel consumption report window will appear, displaying the requested data.
- You can save or delete the filter's input field.
- Review the Summary Report

## Download the Report:

- You can choose to download the report immediately from the filter screen or access it later.
- The entire summary of the fuel consumption can be viewed at a glance after clicking the description icon.
- Click the "PDF" or "XLS" button to download the reports.

By following these steps, you can efficiently create, schedule, and access Fuel Consumption Reports in the Bongo IoT platform.



# Creating A Fuel Abnormal Consumption Report In The Bongo IoT Platform

## Access Fuel Abnormal Consumption Reports:

- Navigate to the "**Side Menu Bar**" and select "**Report**"-> **Fuel Abnormal Consumption**
- In the "**Fuel Abnormal Consumption**" section, you'll find an overview screen displaying previously generated fuel economy reports.

## Create a Fuel Abnormal Consumption Report:

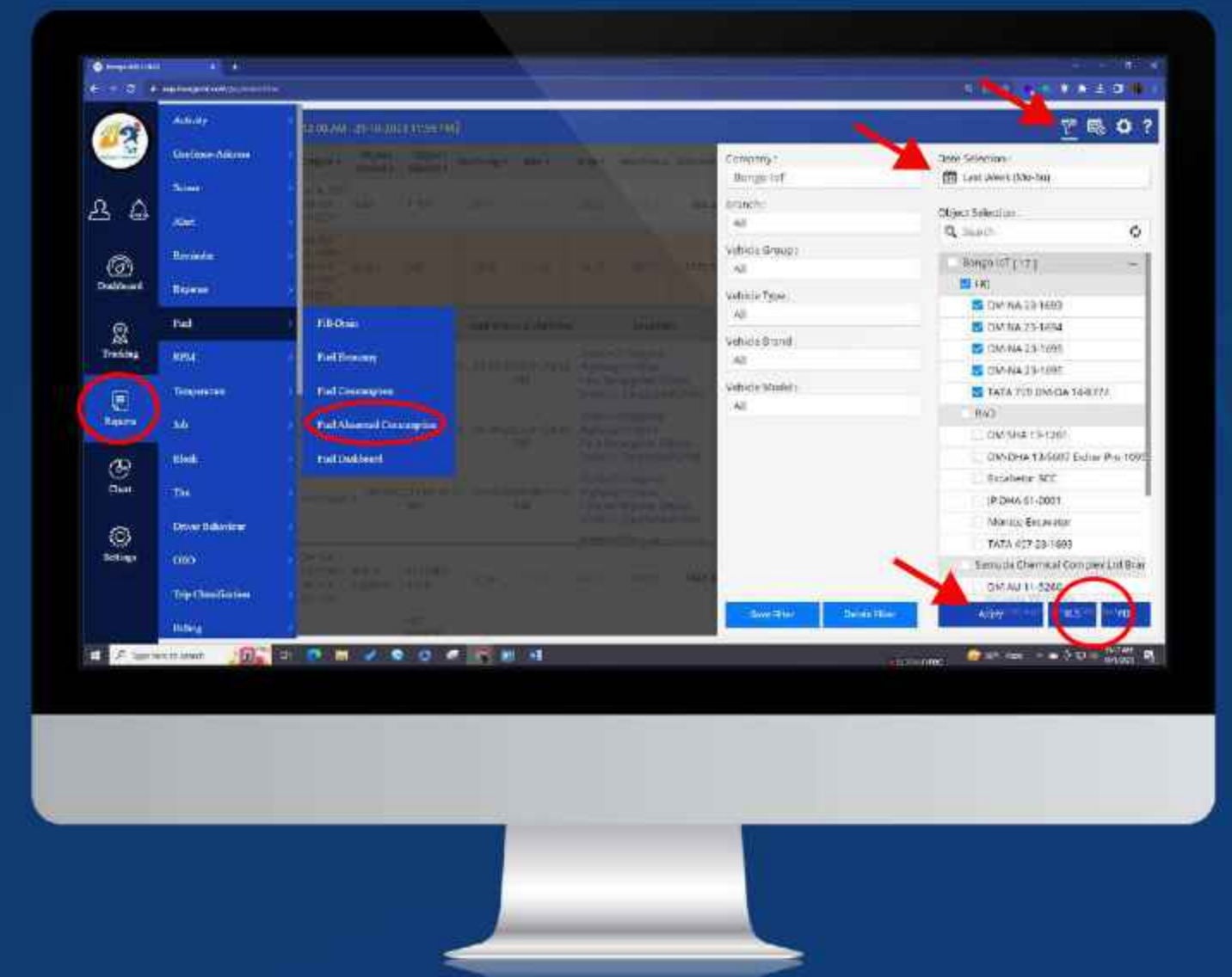
To generate a single or multiple vehicle Fuel Abnormal Consumption report, follow these steps:

- Select the Company, Branch, Vehicle Group, Vehicle Type, and Date from the filter options.
- Choose the duration, such as "Today," "Yesterday," "This Week," "Last Week," "Last Month," or "Custom Range."
- For a custom range, use the date and time picker to select specific start and end dates.
- Click the "**Apply**" button.
- A fuel abnormal consumption report window will appear, displaying the requested data.
- You can save or delete the filter's input field.
- To know more detail on the left side click on "**plus**" symbol
- Abnormal consumption can be identified by comparing "**Predefined Mileage & Actual Mileage**" Column
- Review the Summary Report

## Download the Report:

- You can choose to download the report immediately from the filter screen or access it later.
- The entire summary of the fuel abnormal consumption can be viewed at a glance after clicking the description icon.
- Click the "**PDF**" or "**XLS**" button to download the reports.

By following these steps, you can efficiently create, schedule, and access Fuel Abnormal Consumption Reports in the Bongo IoT platform.



# Generate Fuel Dashboard In The Bongo IoT Platform:

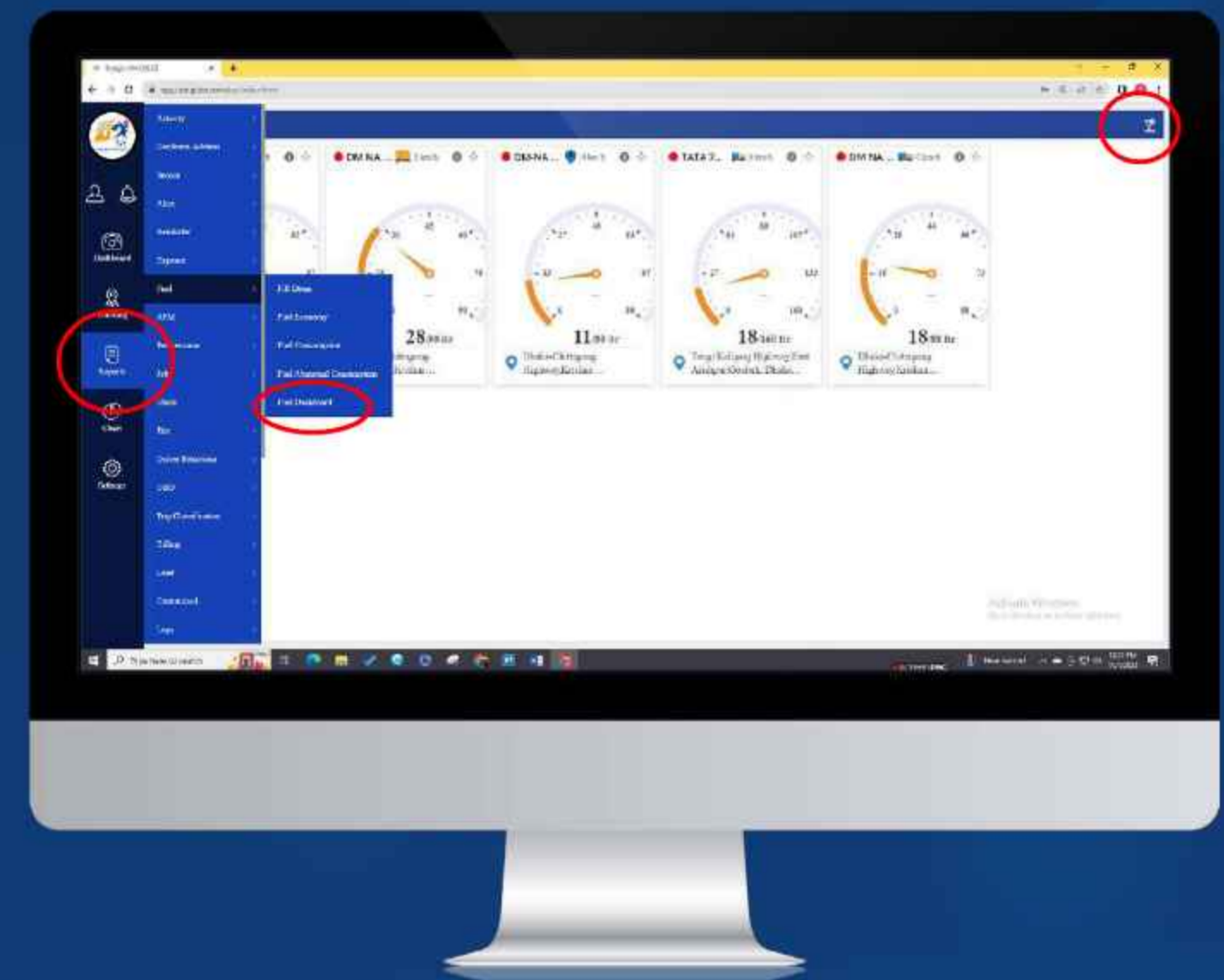
## Access Fuel Dashboards Reports:

- Navigate to the **"Side Menu Bar"** and select **"Report" -> Fuel Dashboards**
- In the **"Fuel Dashboards"** section, you'll find an overview screen displaying real time fuel level dashboard.

## Create a Fuel Dashboard:

To generate a single or multiple vehicle Fuel Dashboard report, follow these steps:

- First on the right click the **"filter"** icon
- Select the Company, Branch, Vehicle Group, Vehicle Type, and Date from the filter options.
- Click the **"Apply"** button.
- A fuel dashboard report window will appear, displaying the requested data.
- You can update or delete the filter's input field.
- Review the dashboard and monitor multiple vehicle real fuel data in a single screen at a time.



By following these steps, you can efficiently create, schedule, and access Fuel Dashboard in the Bongo IoT platform.